

**\*\*\* ALERT RESCINDED \*\*\***



**JEPPESEN<sup>®</sup>**  
***Airport Moving Map Alert***

**!! URGENT !!**

**Date:** 13 October 2022  
**Subject:** Fayetteville/Springdale/Rogers, Arkansas  
Northwest Arkansas Natl (KXNA)  
Cycle 2210

***TWY names incorrect.***

Jeppesen Airport Moving Map and A816 formatted data for cycle 2210, effective 06 October 2022, contain incorrect data for Northwest Arkansas Natl; Fayetteville/Springdale/Rogers, Arkansas (KXNA). NFDD 187 published 28 September, effective 15 October 2022, contains a new airport layout with multiple TWY changes. The following changes, valid from 15 October 2022, are not reflected in cycle 2210 data as do not cover entire AIRAC cycle:

- TWY B (portion next to AER 16) and TWY K are renamed to TWY B1
- TWY C is renamed to TWY B2
- TWY E is renamed to TWY B3
- TWY F (between RWY 17/35 and TWY B) is renamed to TWY B4
- TWY A and TWY B (portion next to AER 34) is renamed to TWY B5
- TWY D is renamed to TWY C
- TWY L is renamed to TWY D
- TWY M is renamed to TWY E
- TWY J is renamed to TWY F
- TWY F (between TWY B and Terminal Apron) is removed

**WE STRONGLY URGE YOU TO MAKE THIS INFORMATION AVAILABLE TO  
APPROPRIATE CREW MEMBERS OR CUSTOMERS IMMEDIATELY!**

If you have questions concerning this Airport Moving Map Alert, please contact Jeppesen Technical Support at:

U.S. Toll Free: 1-800-537-7725

Direct: 1-303-328-4170

E-mail: [gisdatasupport@boeing.com](mailto:gisdatasupport@boeing.com)

Airport Moving Map Alerts are published to advise users of significant issues in Jeppesen Airport Moving Map and A816 data which may affect aircraft ground operations. These Alerts are distributed to affected Airport Moving Map users. Different avionics equipment and computer systems use and display Airport Moving Map and data derived from A816 differently. End Airport Moving Map and A816 data users should consult with their Service Provider for definitive information on whether their system is affected by this Alert.

KXNA\_2210

Revised data will appear in Jeppesen Airport Moving Map and A816 formatted data for cycle 2211, effective 03 November 2022. Until then this Alert will be posted on the Jeppesen Web site: [Notices and Alerts](#). Please refer to the local NOTAMs and Northwest Arkansas Natl, Fayetteville/Springdale/Rodgers, Arkansas (KXNA) 20-9 chart dated 28 OCT 22 for valid information.

If you have questions concerning this Airport Moving Map Alert, please contact Jeppesen Technical Support

at:

U.S. Toll Free: 1-800-537-7725

Direct: 1-303-328-4170

E-mail: [gisdatasupport@boeing.com](mailto:gisdatasupport@boeing.com)

Airport Moving Map Alerts are published to advise users of significant issues in Jeppesen Airport Moving Map and A816 data which may affect aircraft ground operations. These Alerts are distributed to affected Airport Moving Map users. Different avionics equipment and computer systems use and display Airport Moving Map and data derived from A816 differently. End Airport Moving Map and A816 data users should consult with their Service Provider for definitive information on whether their system is affected by this Alert.

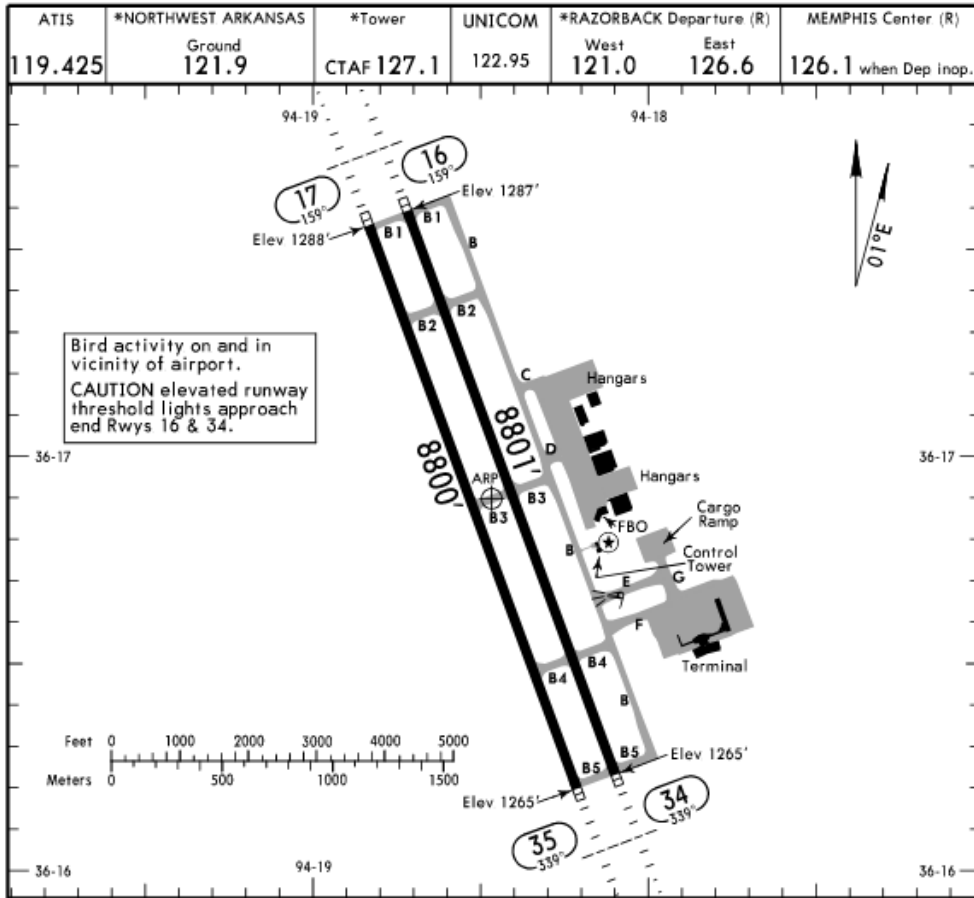
KXNA/XNA

Apt Elev **1288'**  
N36 16.9 W094 18.5

JEPPESEN

28 OCT 22 (20-9)

FAYETTEVILLE/SPRINGDALE/  
ROGERS, ARK  
NORTHWEST ARKANSAS NATL



RWY	ADDITIONAL RUNWAY INFORMATION			
	USABLE LENGTHS	LANDING BEYOND	TAKE-OFF	WIDTH
	Threshold	Glide Slope		
16	① HIRL ① MALSR ① PAPI-L (angle 3.0°) grooved RVR	7632'		150'
34		7766'		
17	MIRL grooved	7630'	8800'	150'
35		7766'		

① Activate on 127.1 when Twr inop. ② LDA 8800'.

TAKE-OFF & OBSTACLE DEPARTURE PROCEDURE											
Rwy 16				Rwy 34				Rwys 17, 35			
Both RVRs are required & controlling	Adequate Vis Ref	STD		With Min climb of 227'/NM to 1900'				Other	Adequate Vis Ref	STD	
		3 & 4 Eng	1 & 2 Eng	RCLM & HIRL	Adequate Vis Ref	3 & 4 Eng	1 & 2 Eng			3 & 4 Eng	1 & 2 Eng
RCLM & HIRL				RCLM & HIRL							
TDZ RVR 10 Rollout RVR 10	RVR 16 or 1/4	RVR 24 or 1/2	RVR 50 or 1	TDZ RVR 10 Rollout RVR 10	RVR 16 or 1/4	RVR 24 or 1/2	RVR 50 or 1	500-2 3/4	1/4	1/2	1

OBSTACLE DP: Rwy 34, climb heading 339° to 1800' before turning left.

FOR FILING AS ALTERNATE			
Authorized Only When Twr Operating			
Authorized Only When Local Weather Available			
ILS Rwy 34	ILS Rwy 16	LOC Rwy 16 LOC Rwy 34	RNAV (GPS) Rwy 16 RNAV (GPS) Rwy 34
A		800-2	800-2
B	600-2	800-2 1/4	800-2 1/4
C	600-2	800-2 1/2	800-2 1/2
D			

CHANGES: Afd diagram, notes, usable lgth, obstacle departure, format. © JEPPESEN, 1998, 2022. ALL RIGHTS RESERVED.